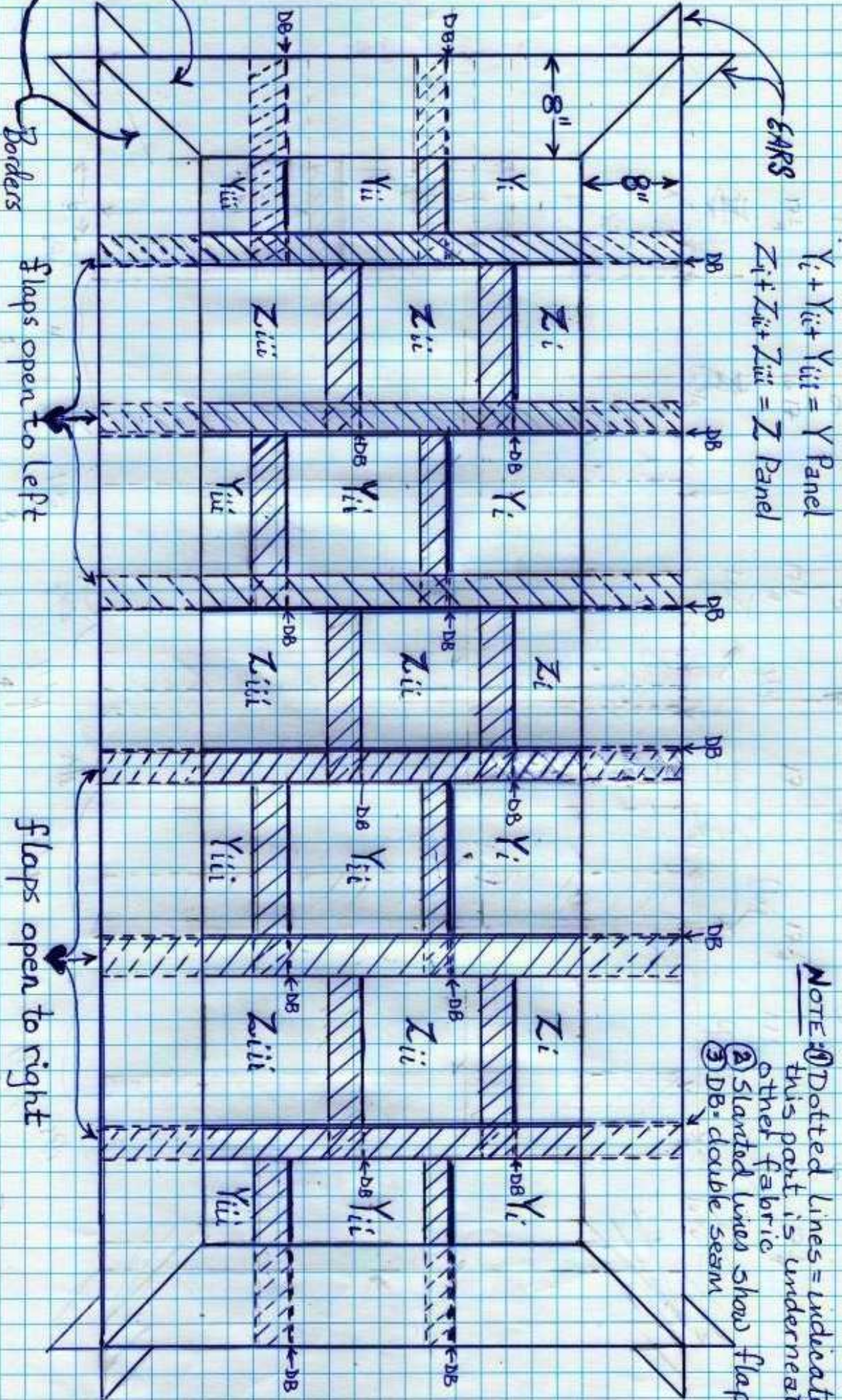
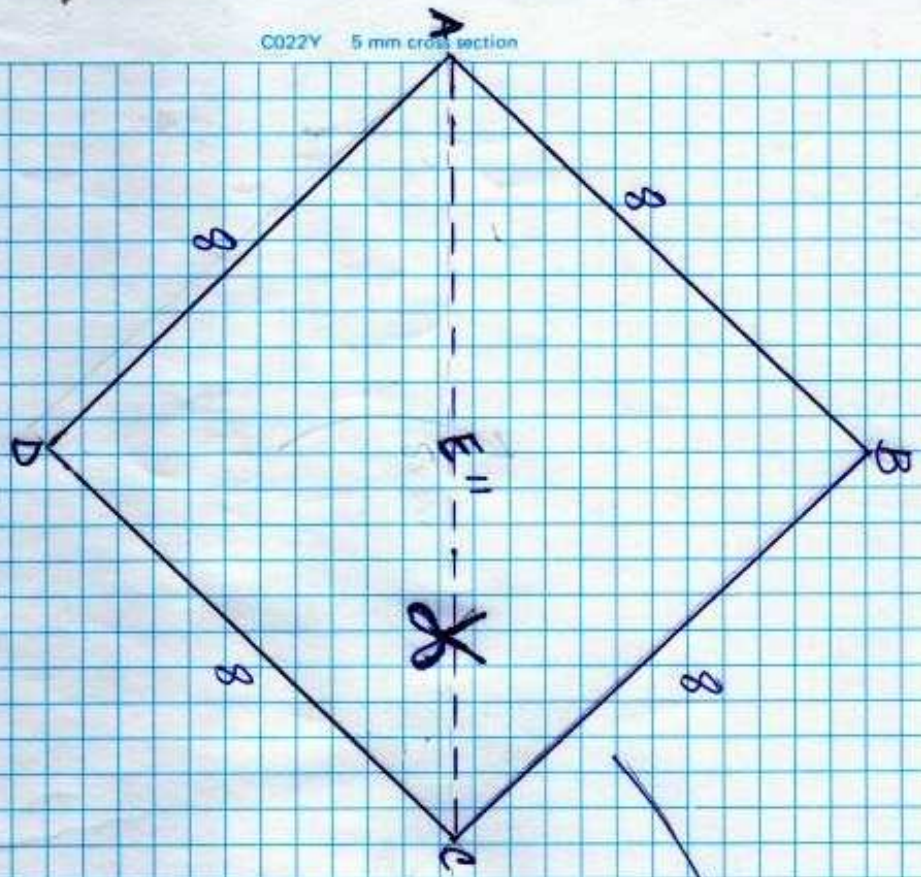


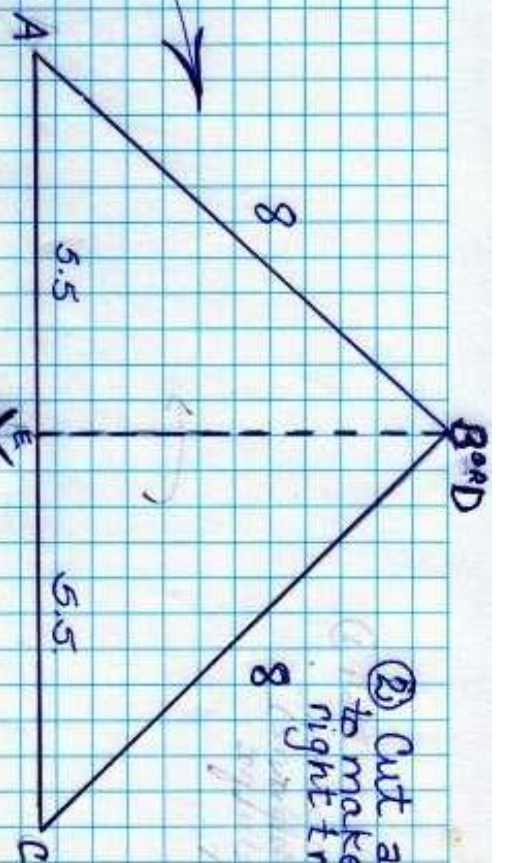
VII CHOEGU VII.a Diagram of Complete Choegu Drawn to Scale; 0.5cm = 5.08 cm = 2 inches



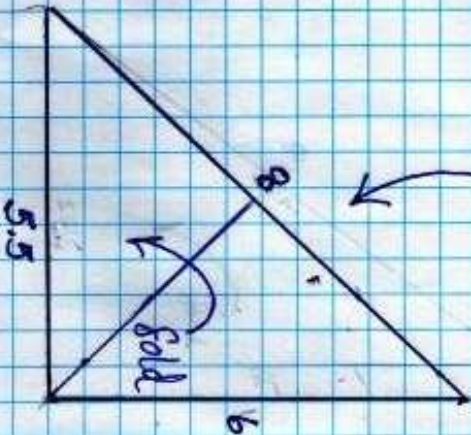
# CHOEGU Diagram VII.b 'EARS'



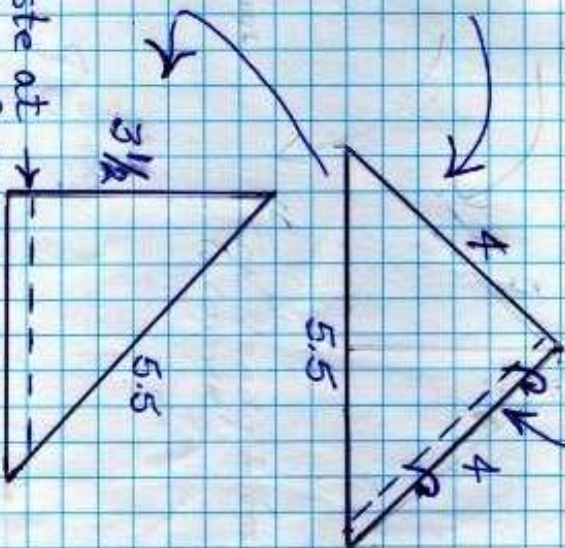
① Cut diagonally from A to C to make two equilateral triangles



② Cut as shown to make two right triangles.



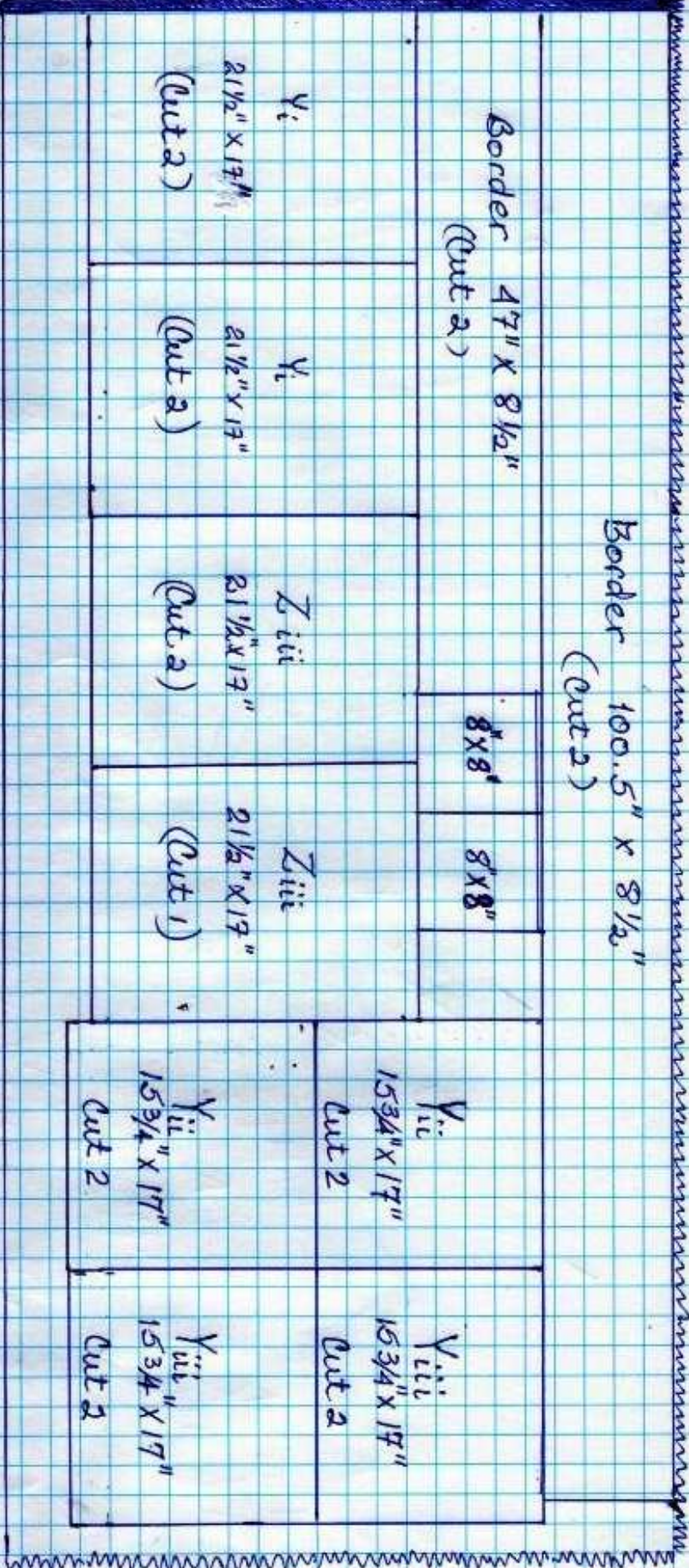
③ Fold in half



④ On one side, Fold in 2 1/2" edges by 1/2" and stitch

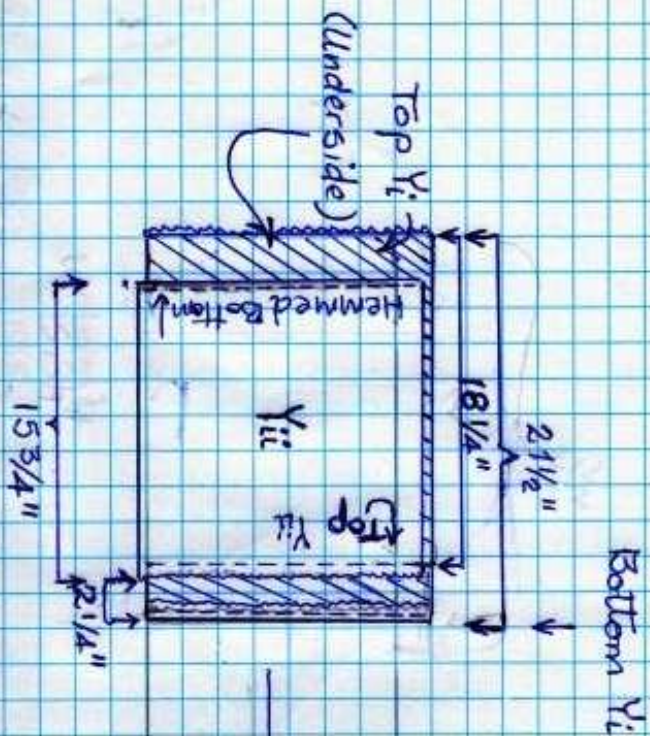
⑤ Baste at corner of Choegu (see Diagram VII.a)

CHOEGU VII.a layout for cutting Scale: 0.5cm = 5.08cm = 2 inches

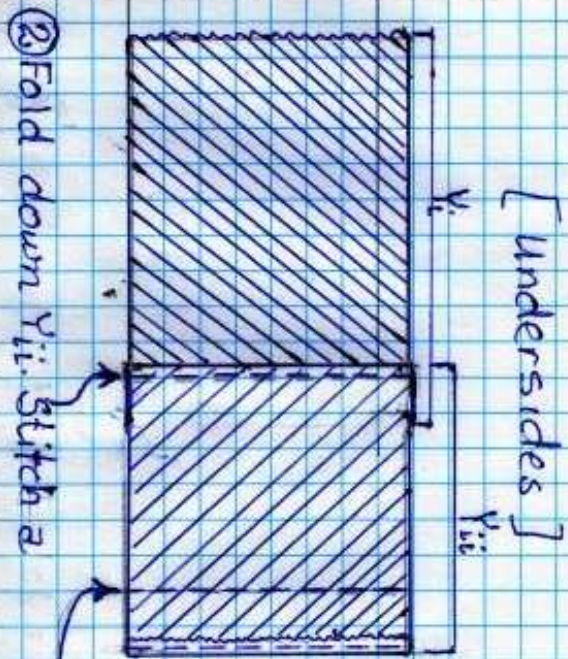


- fold
- ① Cut with material folded in half. material = 45 inches wide.
  - ② Cut Borders:  $2 \times 47'' \times 8 \frac{1}{2}''$
  - ③ Cut Panel Pieces  $4 Y_i = 2 \frac{1}{2}'' \times 17''$  +  $4 Y_{ii}$  and  $4 Y_{iii}$  [  $15 \frac{3}{4}'' \times 17''$  ]  
 $3 Z_{iii} = 2 \frac{1}{2}'' \times 17''$
  - ④ Cut 2  $8 \times 8''$  squares for ears

# CHOEGU. Diagram VII.d. Joining Pieces of Panels Together.



① With Wrong Sides together lay  $Y_{2i}$  on top of  $Y_{1i}$  so the top of  $Y_{2i}$  measures  $18\frac{1}{4}$ " from the top edge of  $Y_{1i}$  and  $2\frac{1}{4}$ " from the bottom hemmed edge of  $Y_{1i}$ . (The bottom hemmed edge of  $Y_{2i}$  will be  $2\frac{3}{4}$ " from the top raw edge of  $Y_{1i}$ . Stitch a  $\frac{1}{4}$ " seam (from top of  $Y_{2i}$ ).



② Fold down  $Y_{1i}$ . Stitch a  $\frac{1}{4}$ " seam from previous seam joining  $Y_{2i}$  to  $Y_{1i}$ .

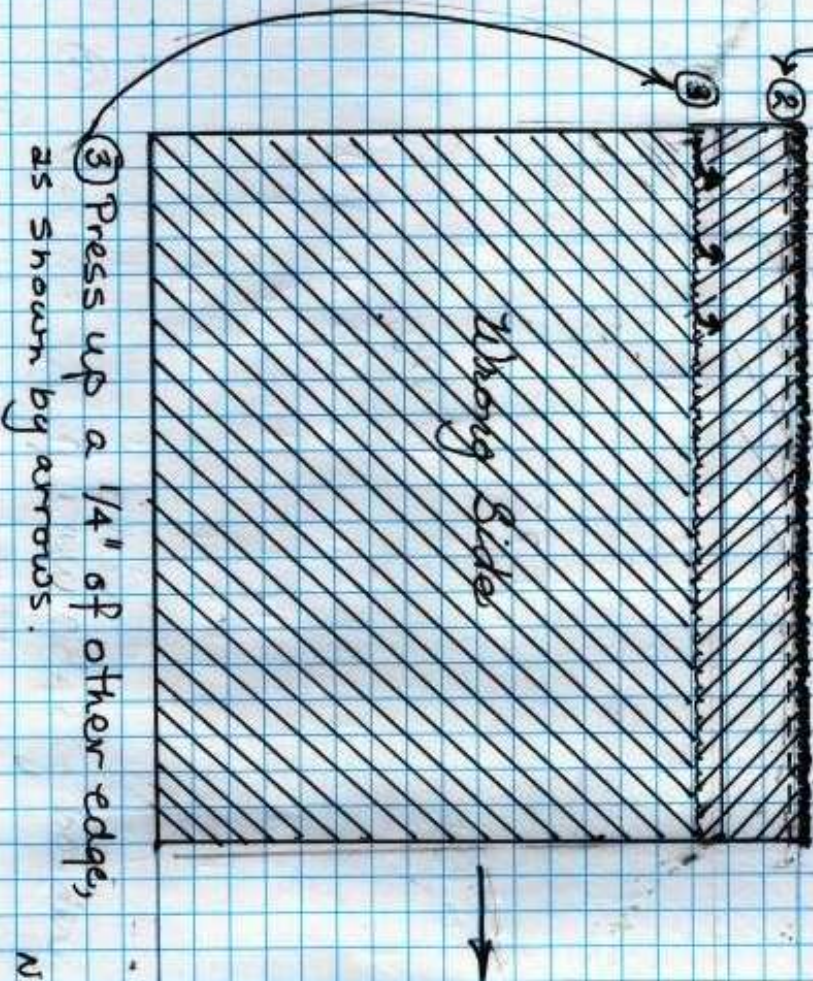
③ Repeat steps ① and ② for joining  $Y_{2i}$  to  $Y_{3i}$ . Remember, WRONG SIDES together, top edge of  $Y_{2i}$  is  $2\frac{1}{4}$ " above the bottom edge of  $Y_{1i}$ . Continue as before

Seam location for joining  $Y_{1i}$  to  $Y_{2i}$

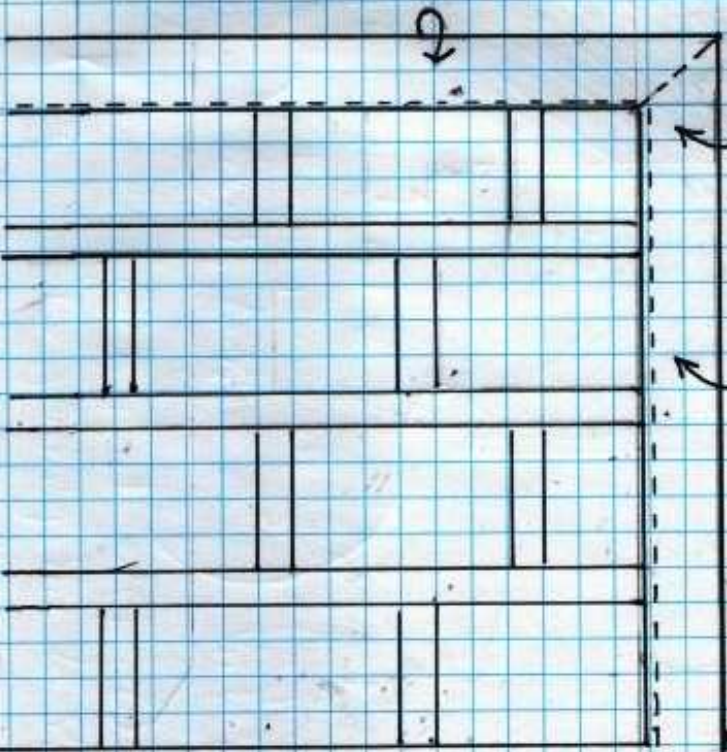
CHOEGU. Diagram VIIe Sewing on Borders

(not to scale)

- ① Place Border with RIGHT side facing Wrong Side of Panels.
- ② Stitch a 1/4" seam close to outside edge as shown.

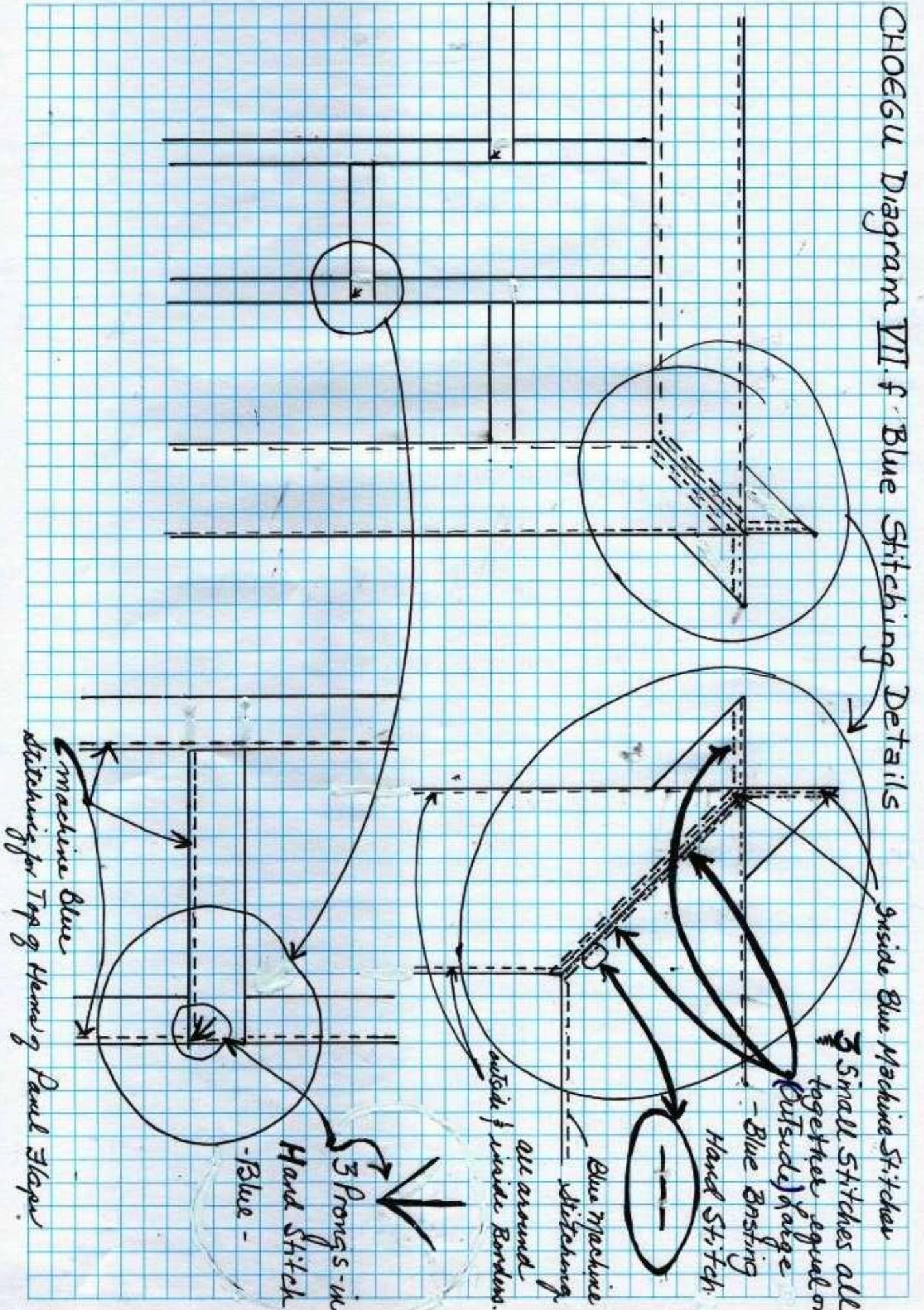


- ④ Turn Border so its Right side is over the Right side of the Panels and the pressed 1/4" of the unsewed edge is tucked under.
- ⑤ Stitch a 1/4" seam <sup>1st</sup> notes. (Below)

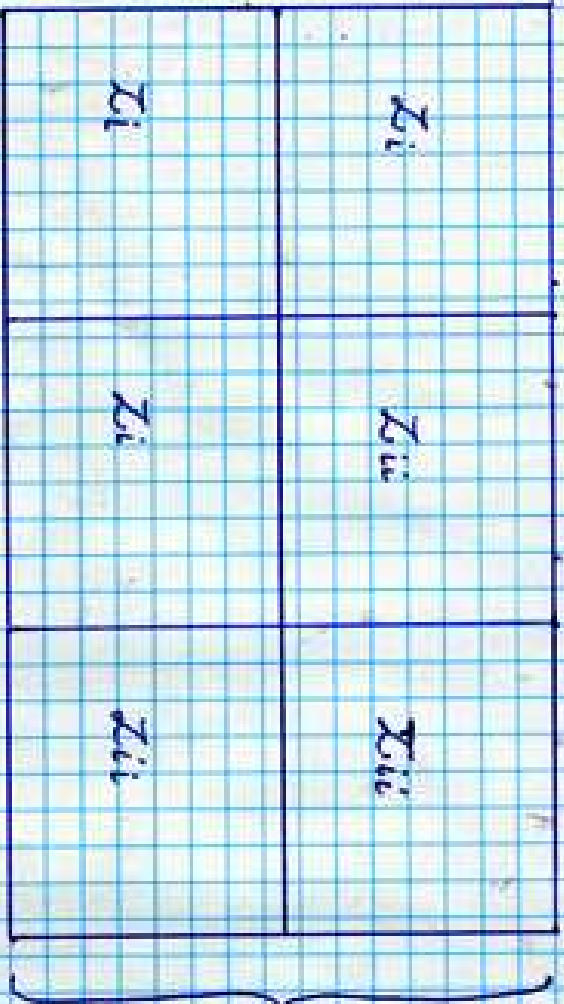


NOTE: Sew from middle to outside corners.  
 NOTE: MAKE Corners with 45° folds. Stitch on both sides.

# CHOEGU Diagram VII f Blue Stitching Details



CHOE GU VII.a (continued) layout for cutting Scale: 0.5cm = 5.08cm = 2 inches



Single layer all 15 3/4" x 19"

3 Zi and 3 Zii [15 3/4" x 19"]

Material Required:  
 7 yards of 45" wide  
 64 metres of 114 metres wide