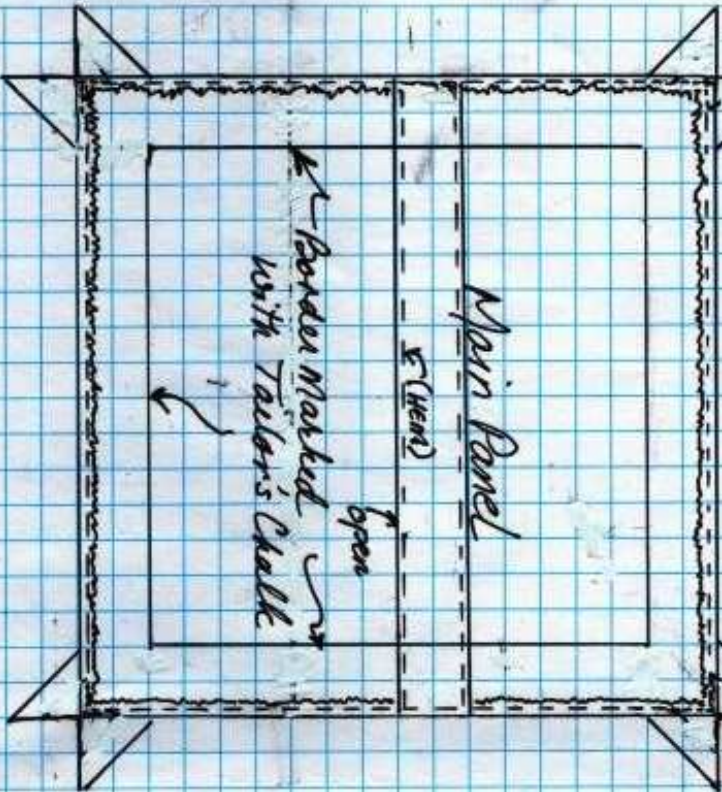
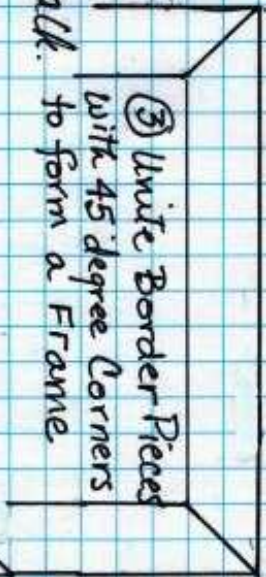


Dingwa Diagram VIII.c Borders and Ears

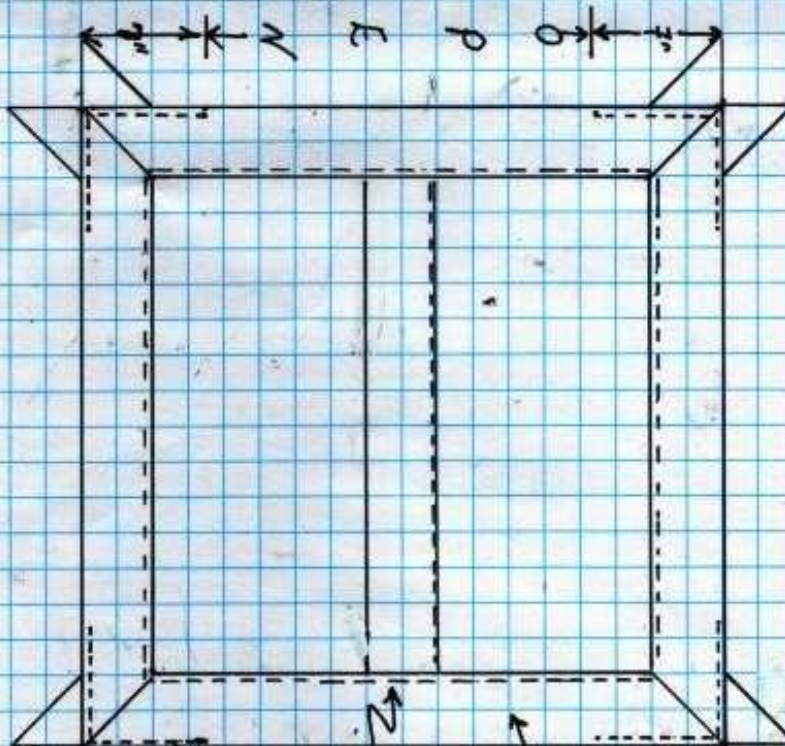
- ① Baste 'Ears' at Corners (Top)
- ② Mark a 4" Border Line all around inside of Main Panel with Tailor's Chalk



- ③ Write Border Pieces with 45 degree Corners to form a Frame



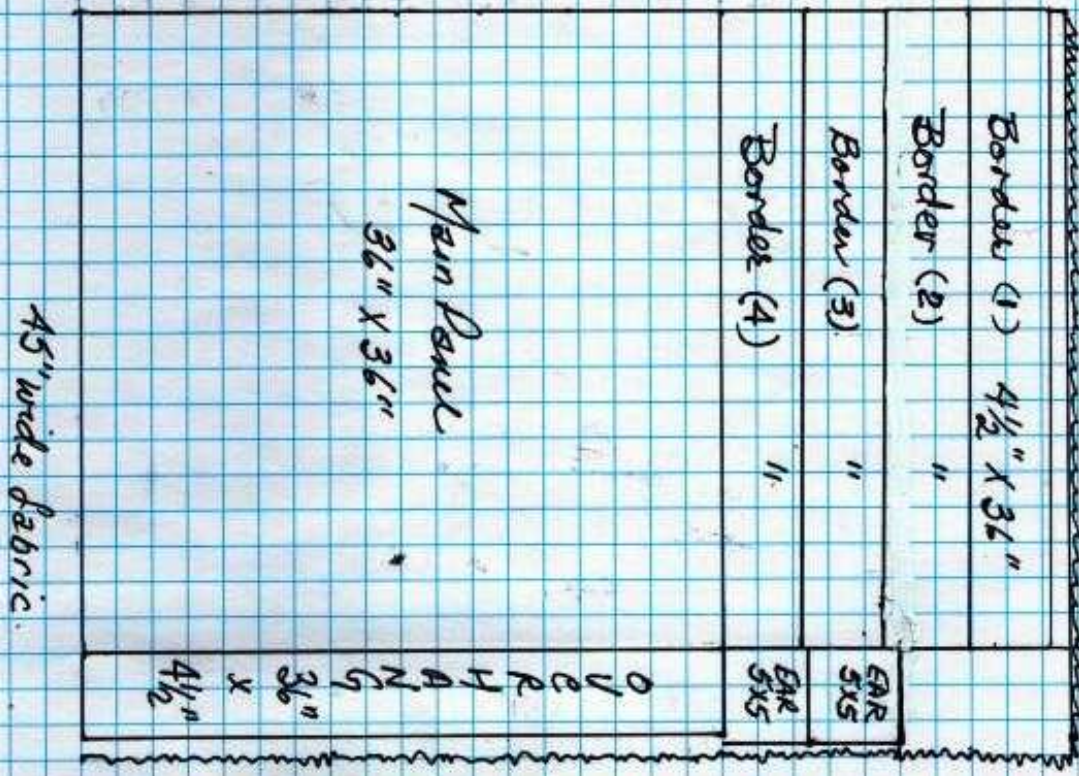
- ④ Lay Borders on top of Main Panel, matching edges. Fin.
- ⑤ Stitch inside edges of Borders to Panel.
- ⑥ Stitch around corners on outside of Borders ONLY 7/8" from Corners Leave Centers open as shown on Outside Edges



Approximate Scale:

0.5cm = 5.08cm = 2 inches

DINGWA Diagram VIII.a Pattern Pieces + Cutting layout



56" long.

Material Needed

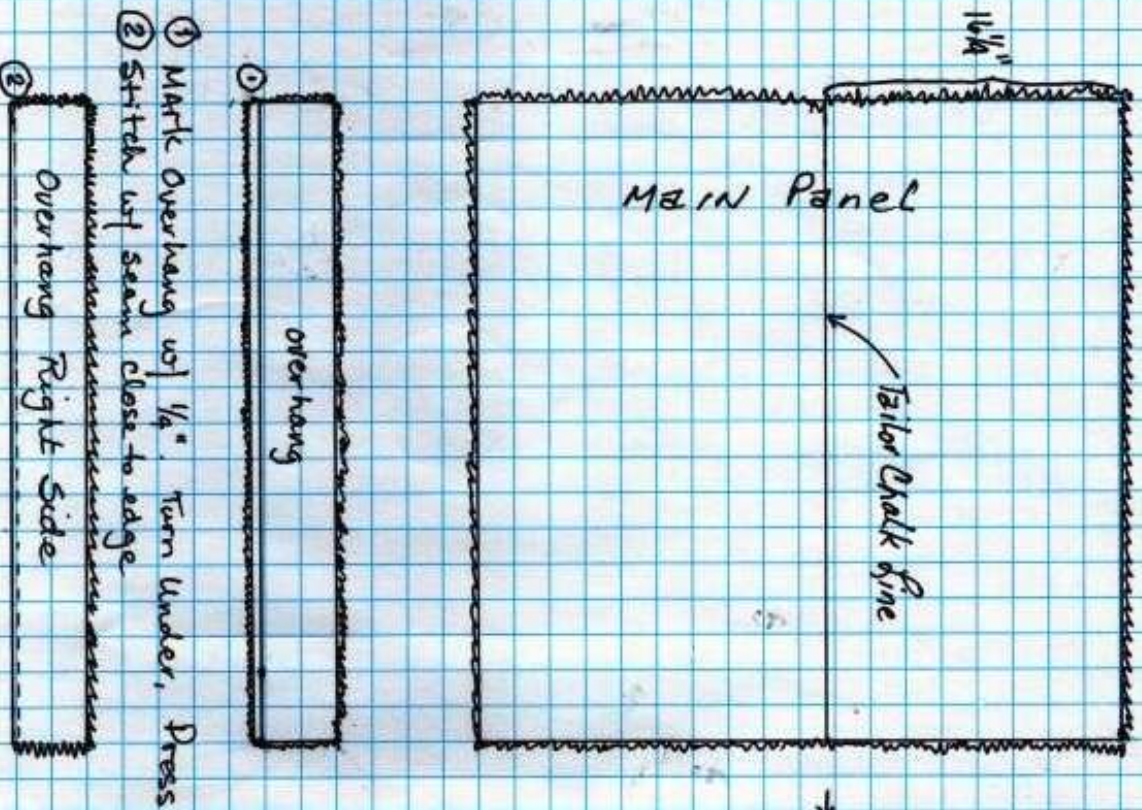
45" wide
x 56" long.

or
1.14 metres wide
x 1.5 metres long

Approximate Scale:

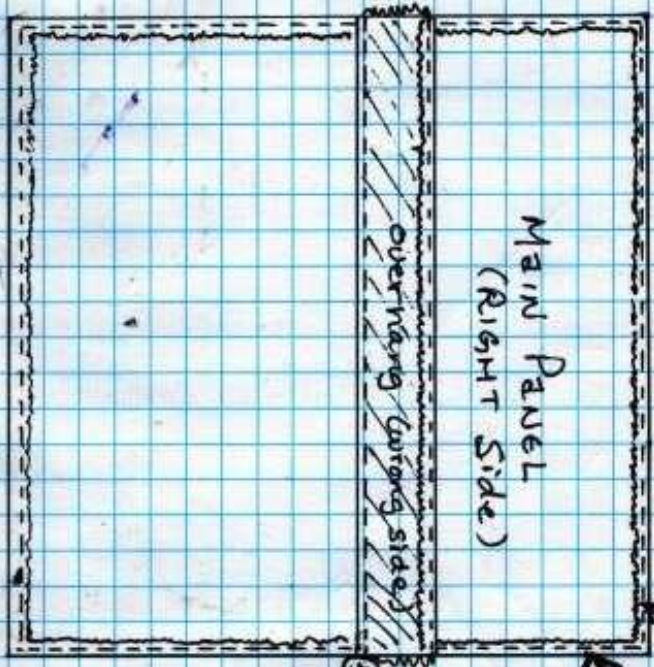
0.5 cm = 5.08 cm
= 2 inches

DIVISION Diagram VIII.b Overhang and Hems

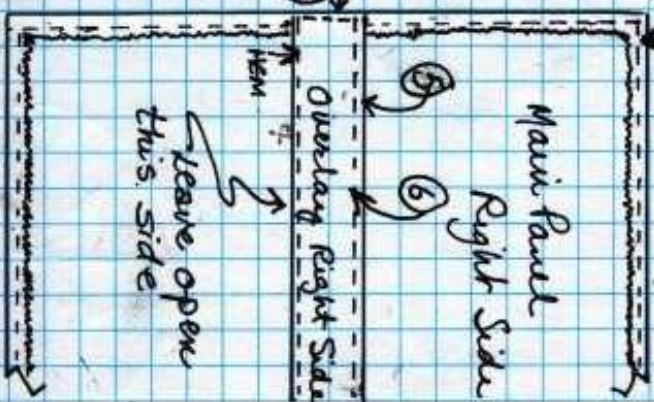


- ① Mark Overhang wof 1/4". Turn Under, Press
- ② Stitch wof seam close to edge

③ Hem Edges of Main Panel so rough edges face up.



- ④ Stitch Overlay to Main Panel as shown, over hemmed edges
- ⑤ Turn Overlay down
- ⑥ Top stitch top of Overlay (right side), and also stitch sides down
- ⑦ after turning down each side 1/4" to form neat edged hem.



Approximate Scale:
 0.5cm = 508cm
 = 2 inches