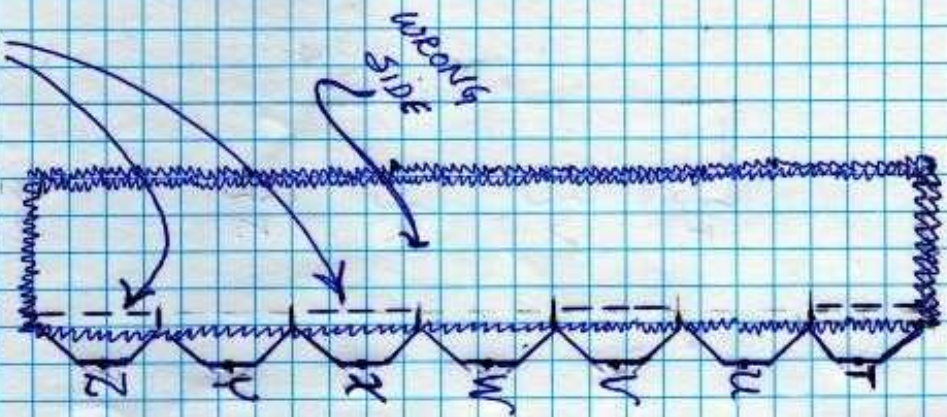
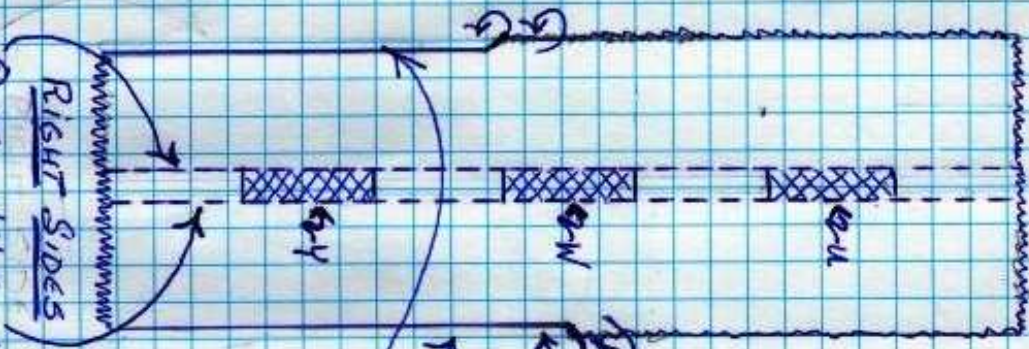


# IV GETSUL SHEMDAP IV.b Constructing the Side Panels



① Sew 2 four inch pieces with a  $\frac{1}{4}$ " seam, leaving gaps at U, W and Y. Open up. Press seam edges to outside (of the center edges)

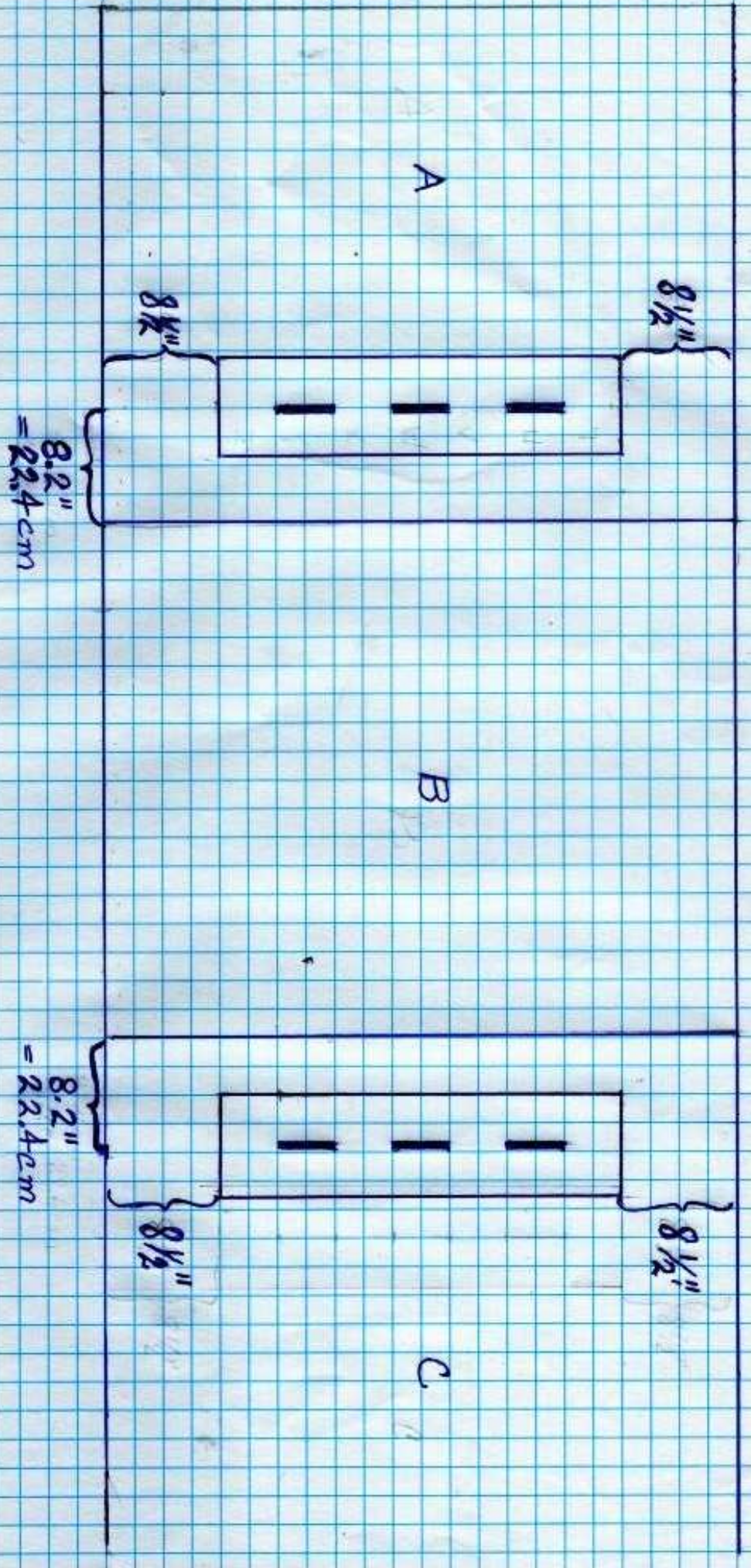


② Top stitch along the center on either sides of solid sewed spaces and gaps.

③ Fold under  $\frac{1}{4}$ " on outsides of each side. Press.

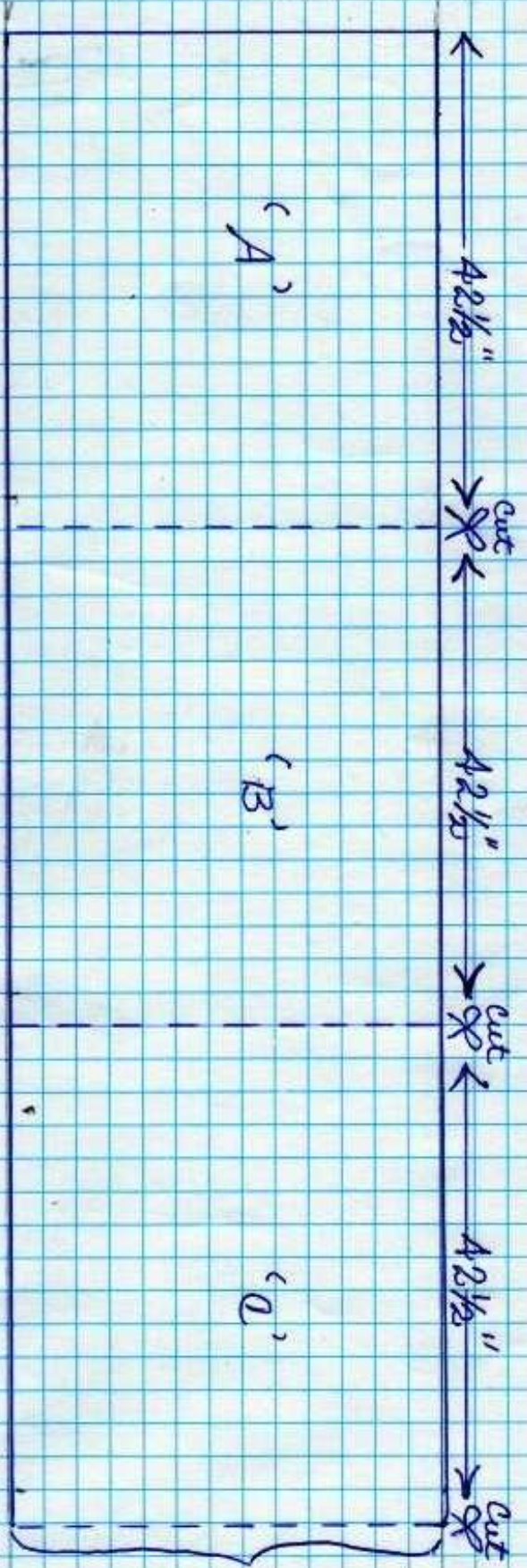


IV Getsul SHERDAP IVc Sewing Side Panels onto Main Panels



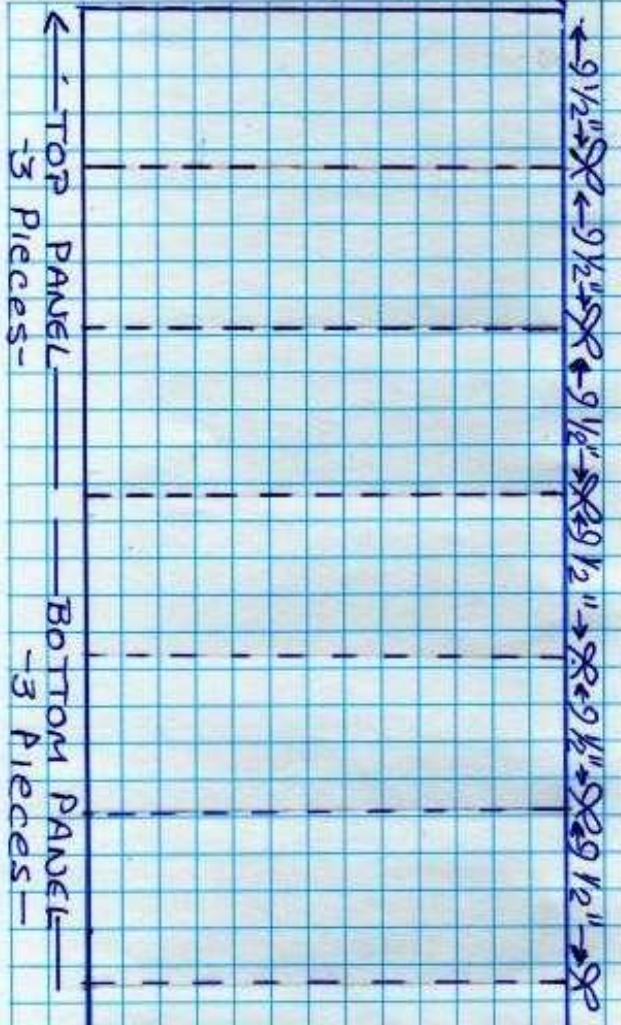


# IV GETSUL SHEMAKAP Ika Layout and Cutting



→ Cut 3 sections of the correct length 36" for main Panel

[For this example 42 1/2"]



4 Pieces for Side Panels



✓ NOT TO SCALE